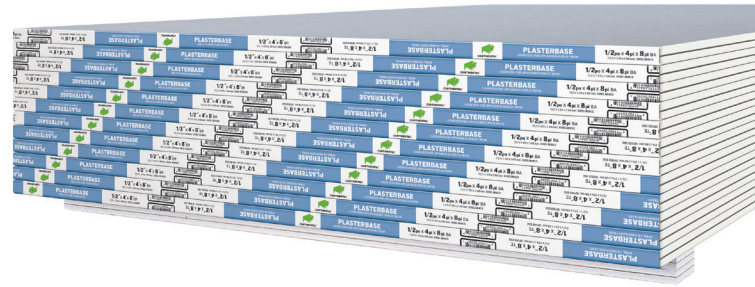




CONTINENTAL[™]
BUILDING PRODUCTS



Applications

Designed as an enhanced fire-resistant base layer for veneer plaster systems in both residential and commercial construction applications.

- Interior walls
- Interior ceilings

Advantages

Ease of Installation: Fast installation similar to regular drywall.

Compatibility: Provides a strong bonding surface for gypsum veneer plasters that meet ASTM C587.

Identification: Dark blue face paper clearly distinguishes it from regular drywall.

DRYWALL FOR VENEER PLASTER FINISHES

PLASTERBASE

Continental Building Products Plasterbase is a base layer gypsum board for interior veneer plaster-finished walls and ceilings. The board has a non-combustible gypsum core, covered with paper facings on the front (blue), back, and long edges. The special-bonding blue veneer face paper creates an optimum plaster “working” rate and increases plaster adhesion. The board will accommodate up to two veneer plaster finish coats.

Plasterbase is designed for use in applications that require direct mechanical attachment to wood or metal framing. For best plasterworking and adhesion properties, the veneer plaster should be applied as soon as possible after board installation.

While Plasterbase has some inherent fire-resistant characteristics, this product is not intended to provide levels of fire resistance required by various building codes and standards and should not be used for such purposes. For fire resistance, use Firecheck Plasterbase Type X.

Note: Plasterbase is suitable for interior applications only, and should not be used where temperatures exceed 125° F for extended periods or in areas of extreme humidity. Likewise, the board should be protected from exposure to adverse conditions during storage and construction. The special facing paper is unsuitable as a base for adhesive applications such as tiles or paint.

JOB NAME:

CONTRACTOR:

DATE:

Sustainability

Can contribute to the U.S. Green Building Council's LEED Credit Qualification in several credit categories to assist in obtaining LEED certification.



Physical Characteristics

Core: Non-combustible, dimensionally stable, inert gypsum

Paper: 100% recycled; Treated to accept plaster veneer; Front and edges = blue, back = gray

Long Edges: Tapered

Asbestos free and GREENGUARD certified

Available Sizes:

| | |
|-------------------|---------------------------|
| Nominal thickness | 1/2 in. |
| Nominal width | 4 ft. |
| Standard length | 8 ft.-12 ft. |
| Nominal weight | 1.6 lbs./ft. ² |

Standards and Codes

Manufactured to meet ASTM C1396/C1396M, Section 10; and CAN/CSA-A82.27-M.

Technical Specifications

UL classified for surface burning (File No. R16102) (per ASTM E84 and CAN/ULC-S102) Flame spread = 0; Smoke developed = 0; Meeting IBC, Section 803.1, Class A

Core combustibility (tested in conformance with ASTM E136) Non-combustible

Installation

Install according to Gypsum Association GA-216 or ASTM C844. Consult ASTM C843 for gypsum veneer plaster finishing recommendations.

Painting and Decorating

For best results, a good gypsum board primer should be applied in accordance with manufacturer's instructions before painting or before any textured material is applied.

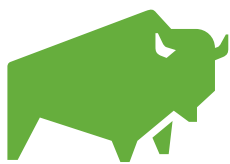
Handling Recommendations

Stack flat, keep dry and lift (do not drag) to avoid scuffing. Avoid damage to edges. For detailed recommendations, refer to GA-216 and GA-801.

Safety Precautions

Wear safety glasses and NIOSH-approved respirators during cutting, breaking, rasping or other dust-producing activities.

Safety Data Sheets (SDS) are available for all Continental products upon request.



CONTINENTAL™

CONTINENTAL BUILDING PRODUCTS

USA (800) 237-5505

Canada (866) 649-7786

www.continental-bp.com

