

**CONTINENTAL™**  
BUILDING PRODUCTS

### Applications

Rapid Deco Type C with Mold Defense drywall is the best solution for areas specified for a Level 5 finish, such as:

- Hotel lobbies and interior public spaces
- Board rooms and conference rooms
- Office atriums and hallways
- High-end residential housing
- Any area where critical lighting or gloss paints are specified in which a smooth finish is desired

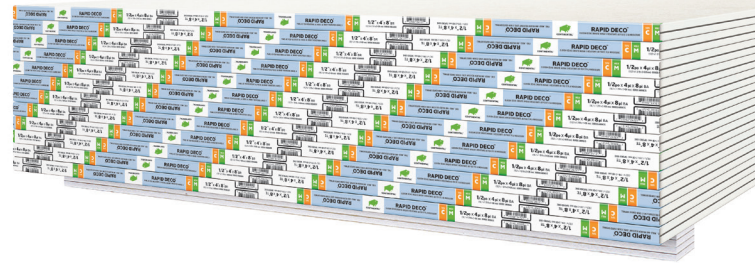
### Advantages

- Provides an equivalent to a field-applied Level 5 finish in the same number of steps as a Level 4 finish
- Mold, mildew and fire resistance
- Creates a uniform surface and the highest-quality finish
- Provides consistent job results
- Minimizes jobsite application labor and reduces cost over a field-applied Level 5 finish
- Installs in the same manner as traditional drywall — no special tools or enhanced skills required
- Superior Level 5 results in less time
- Very low flame spread
- Meets Level 3 for abrasion resistance per ASTM C1629

JOB NAME: \_\_\_\_\_

CONTRACTOR: \_\_\_\_\_

DATE: \_\_\_\_\_



## FIRE-, MOLD- AND MILDEW- RESISTANT LEVEL 5 SKIM-COATED DRYWALL

# RAPID DECO® LEVEL 5 TYPE C WITH MOLD DEFENSE®

**Continental Building Products** Rapid Deco Level 5 Type C with Mold Defense skim-coated drywall is a fire-, mold- and mildew-resistant gypsum board pre-finished with a specially formulated skim-coat material to facilitate finishing to a Level 5 finish. This skim coat is factory-applied to provide a consistent and uniform finish.

Rapid Deco Type C with Mold Defense is enhanced with glass fibers and other ingredients for premium fire protection for interior walls, ceilings, and area separations. Because of its strengthened, fire-resistant core, Rapid Deco Type C with Mold Defense can remain intact for a prolonged period during a fire, preventing further spread of flames and – when then installation is properly sealed at the joints – smoke.

Rapid Deco Type C with Mold Defense drywall is installed in the same manner as traditional drywall and finished with Rapid Deco Level 5 joint compound to easily and quickly produce a Level 5 finish (Please refer to the Rapid Deco Level 5 joint compound submittal sheet for technical information).

Rapid Deco Type C with Mold Defense drywall is designed for use in applications that require direct mechanical attachment to wood or metal framing, or as a component of fire-rated assemblies. May also be used as a thermal barrier in roof assemblies when specified by the roofing manufacturer. To ensure optimum Type C fire resistance performance, follow recommended installation procedures for fire-rated assemblies. When properly sealed and used in a certified sound-rated assembly, Rapid Deco Type C with Mold Defense drywall will also contribute to the required sound transmission classification (STC) values.

Continental's Mold Defense products are compliant with the treated article exemption of FIFRA as determined by the U.S. Environmental Protection Agency (EPA). Rapid Deco Type C with Mold Defense drywall offers enhanced protection against the growth of mold and mildew on its surface and in its core compared to ordinary drywall products. Under controlled testing conditions, it achieved an average panel score of 10 out of a possible 10 using ASTM D3273.\*

Note: Rapid Deco Type C with Mold Defense drywall is suitable for interior applications only and should not be used where temperatures exceed 125 ° F for extended periods or in areas of extreme humidity. Likewise, the board should be protected from exposure to adverse conditions during storage and construction.

**Rapid Deco Level 5 System:** Consists of a skim-coated drywall and a specially formulated, matching joint compound. Used together, they create an equivalent substitution to a field-applied Level 5 finish (per ASTM C840).

## Sustainability

Can contribute to the U.S. Green Building Council's LEED Credit Qualification in several credit categories to assist in obtaining LEED certification.



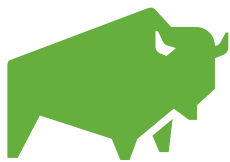
**Limitations:** Rapid Deco is designed to replicate a field-applied skim coat. A skim coat will not approximate a plastered surface. For an entirely smooth, blemish-free surface, a veneer plaster or hard-wall plaster system is recommended. See Gypsum Association publication GA-214 for additional details on skim coating.

Continental cannot control the workmanship of the installed or finished product. Finish satisfaction will only be obtained when proper installation practices are followed and products are properly used. Care must be taken to ensure all joints, trim and fasteners are properly treated and are flat to the plane of the board surface.

Continental cannot control the painting and decorating process. Architectural specifications for decoration and manufacturer's product application instructions must be strictly followed to obtain finish satisfaction.

\*Mold Defense provides extra resistance against the formation of mold, but no product may be considered "mold proof." The most effective way to avoid the formation of mold and mildew in drywall products is to limit or avoid water exposure during storage and construction, and after construction is complete. Used in combination with appropriate design, handling, construction and installation practices, Mold Defense drywall can provide increased mold and mildew resistance on its surface and in its core. ASTM D3273 is the "Standard Test Method for Resistance to Growth of Mold on the Surface of Interior Coatings in an Environmental Chamber" and is performed under controlled, laboratory conditions. Actual storage, handling, construction and installation conditions may vary from the environment created in the independent lab, and the use of the product in actual conditions may not replicate the ASTM results.

\*\*The federal specification for gypsum board, SS-L-30D, was withdrawn in 1984. It is provided here for information only and should not be referenced for new construction.



**CONTINENTAL™**

### CONTINENTAL BUILDING PRODUCTS

USA (800) 237-5505  
Canada (866) 649-7786  
www.continental-bp.com

## Physical Characteristics

**Core:** Non-combustible, dimensionally stable, inert gypsum enhanced with glass fiber for strength and fire resistant

**Paper:** 100% recycled; Face paper coated with a specially formulated skim-coat material; Edges = ivory, back = gray

**Long Edges:** Tapered

**Asbestos free and GREENGUARD certified**

## Standards and Codes

Formulated to perform in accordance with ASTM C1396/C1396M, Section 5, Gypsum Wallboard and C36, Type X, Premium (factory-finished per ASTM C840 Level 5) and ASTM C1629, Surface Abrasion Level 3; Federal Specification SS-L-30D\*\*, Type III, Grade X; and CAN/CSA-A82.27-M.

## Technical Specifications

UL classified for surface burning (File No. R16102) (per ASTM E84 and CAN/ULC-S102) Flame spread = 0; Smoke developed = 0; Meeting IBC, Section 803.1, Class A

Core combustibility (per ASTM E 136) Non-combustible

UL classified for fire resistance (File No. R18482) as Type LGFC-C/A per ASTM E119 and CAN/ULC-S101

Mold and mildew resistant (10 out of 10 score, ASTM D3273)\*

## Installation

Install according to Gypsum Association GA-216 or ASTM C840. For fire-rated construction, consult GA-600 Fire Resistance Design Manual and UL Fire Resistance Directory. Rapid Deco Level 5 joint compound should be used for best match to Rapid Deco drywall. Refer to GA-214 for more finishing recommendations.

## Painting and Decorating

It is recommended that a visual inspection be done prior to painting to confirm that proper finishing practices have been followed to avoid anomalies in the painting and decorating process. For best results, a good gypsum board primer should be applied in accordance with manufacturer's instructions before painting or before any texture material is applied.

## Handling Recommendations

Stack flat, keep dry and lift (do not drag) to avoid scuffing. Avoid damage to edges. For detailed recommendations, refer to GA-216 and GA-801.

## Safety Precautions

Wear safety glasses and NIOSH-approved respirators during cutting, breaking, rasping or other dust-producing activities.

Safety Data Sheets (SDS) are available for all Continental products upon request.

## Available Sizes:

Nominal thickness	5/8 in.
Nominal width	4 ft.
Standard length	10 ft. and 12 ft. (other lengths available by special order)
Nominal weight	1/2 in. = 1.95 lbs./ft. <sup>2</sup> 5/8 in. = 2.3 lbs./ft. <sup>2</sup>

