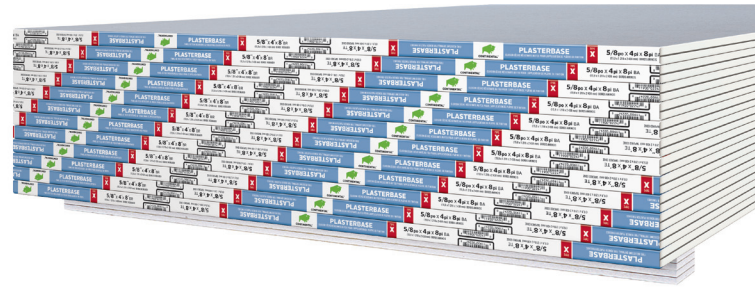


CONTINENTAL™
BUILDING PRODUCTS



Applications

Designed as an enhanced fire-resistant base layer for veneer plaster systems in both residential and commercial construction applications.

- Interior walls
- Interior ceilings

Advantages

Ease of Installation: Fast installation similar to regular drywall.

Compatibility: Provides a strong bonding surface for gypsum veneer plasters that meet ASTM C587.

Fire Resistance: Formulated to perform in accordance with ASTM C1396/C1396M, Section 10 and C588, Type X and is UL labeled (Type LGFC6A).

Identification: Dark blue face paper clearly distinguishes it from regular drywall.

FIRE-RESISTANT DRYWALL FOR VENEER PLASTER FINISHES

FIRECHECK® PLASTERBASE TYPE X

Continental Building Products Firecheck Plasterbase Type X is a base layer gypsum board for interior veneer plaster-finished wall and ceiling applications that require fire resistance. The board has a non-combustible gypsum core, enhanced with glass fibers for protection against fire and the passage of heat. It is covered with paper facings on the front (blue), back, and long edges.

The special-bonding blue veneer face paper creates an optimum plaster “working” rate and increases plaster adhesion. The board will accommodate up to two veneer plaster finish coats.

Firecheck Plasterbase Type X is designed for use in applications that require direct mechanical attachment to wood or metal framing or as a component of fire-rated assemblies. For best plasterworking and adhesion properties, the veneer plaster should be applied as soon as possible after board installation. To ensure optimum Type X fire resistance performance, follow recommended installation procedures for fire-rated assemblies.

Note: Firecheck Plasterbase Type X is suitable for interior applications only, and should not be used where temperatures exceed 125° F for extended periods or in areas of extreme humidity. Likewise, the board should be protected from exposure to adverse conditions during storage and construction. The special facing paper is unsuitable as a base for adhesive applications such as tiles and paint.

JOB NAME:

CONTRACTOR:

DATE:

Sustainability

Can contribute to the U.S. Green Building Council's LEED Credit Qualification in several credit categories to assist in obtaining LEED certification.



*The federal specification for gypsum board, SS-L-30D, was withdrawn in 1984. It is provided here for information only and should not be referenced for new construction.

Physical Characteristics

Core: Non-combustible, dimensionally stable, inert gypsum, enhanced with glass fibers for strength and fire resistance

Paper: 100% recycled; Treated to accept plaster veneer; Front and edges = blue, back = gray

Long Edges: Tapered

Asbestos free and GREENGUARD certified

Available Sizes:

Nominal thickness	5/8 in.
Nominal width	4 ft.
Standard length	8 ft.-12 ft.
Nominal weight	2.26 lbs./ft. ²

Standards and Codes

Formulated to perform in accordance with ASTM C1396/C1396M, Section 10 and C588, Type X; Federal Specification SS-L-30D*, Type VI, Grade X; CAN/CSA-A82.27-M, Type X; and NYC MEA # 204-o8-M.

Technical Specifications

UL classified for surface burning (File No. R16102) (per ASTM E84 and CAN/ULC-S102) Flame spread = 0; Smoke developed = 0; Meeting IBC, Section 803.1, Class A

Core combustibility (per ASTM E136) Non-combustible

UL classified for fire resistance (File No. R18482) as Type LGFC6A per ASTM E119 and CAN/ULC-S101

Installation

Install according to Gypsum Association GA-216 or ASTM C844. For fire-rated construction, consult GA-600 Fire Resistance Design Manual and UL Fire Resistance Directory. Consult ASTM C 843 for gypsum veneer plaster finishing recommendations.

Painting and Decorating

For best results, a good gypsum board primer should be applied in accordance with manufacturer's instructions before painting or before any textured material is applied.

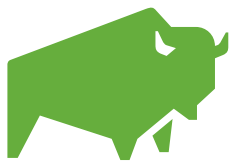
Handling Recommendations

Stack flat, keep dry and lift (do not drag) to avoid scuffing. Avoid damage to edges. For detailed recommendations, refer to GA-216 and GA-801.

Safety Precautions

Wear safety glasses and NIOSH-approved respirators during cutting, breaking, rasping or other dust-producing activities.

Material Safety Data Sheets (MSDS) are available for all Continental products upon request.



CONTINENTAL™

CONTINENTAL BUILDING PRODUCTS

USA (800) 237-5505
Canada (866) 649-7786
www.continental-bp.com

